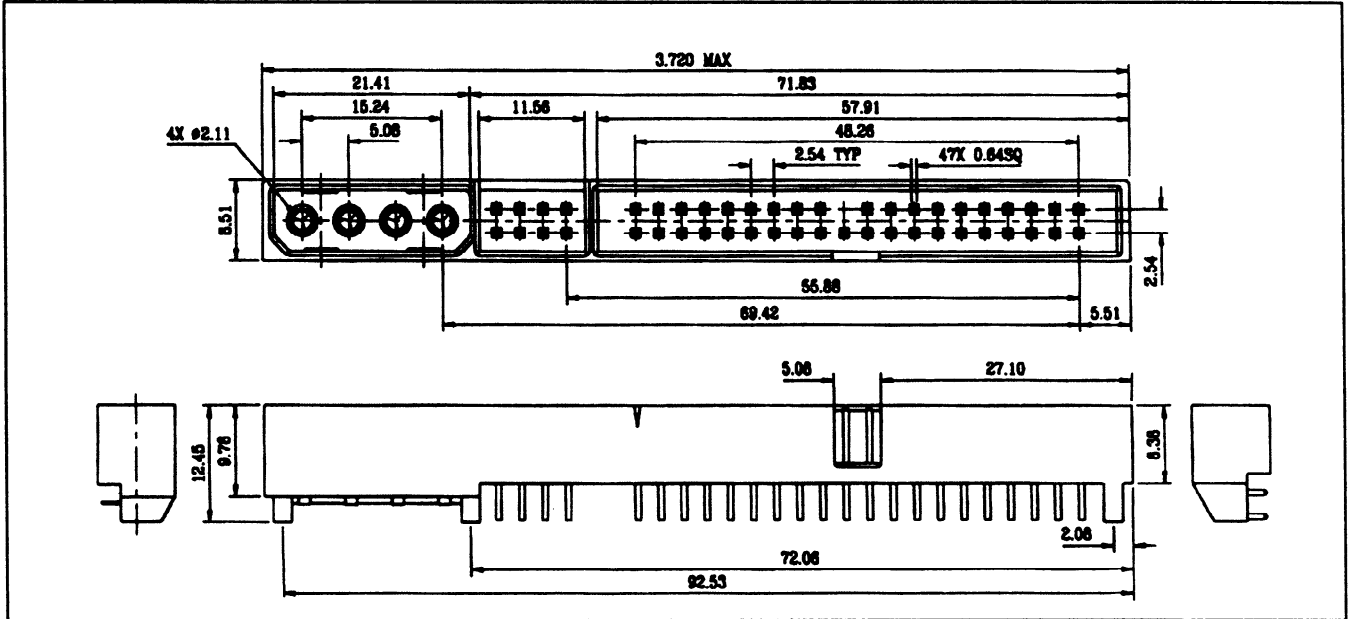




# 0100

## 3 in 1 Combo, Right Angle



### Features

- \* Industry standard SCSI and Power Supply Connector
- \* PCB through hole for reliability
- \* Offset PCB for higher headstack configuration
- \* Jumper selection upfront for easy use
  
- \* Material : High Temperature Nylon  
Copper Alloy Terminals
  
- \* Electrical : Current - 1Amp Data Pin, 5Amp Power Pin  
Insulation Resistance 1000 M ohms  
Dielectric : 500 Vdc

### Order Information

Part Number	Plating Options (Data Pin)	(Solder tail)	Remarks
0100 - 4713	Gold Flash	100 u Inch Solder	Prefered Standard
0100 - 4723	15 u Inch	100 u Inch Solder	
0100 - 4753	15 u inch Gold/ Palladium	100 u Inch Solder	
0100 - 4755	15 u Inch Gold/ Palladium	200 u Inch Solder	Prefered Standard
0100 - 4765	30 u Inch Gold/Palladium	200 u Inch Solder	
0100 - 4700	Open Options, please contact Sales		

Note: All power pins come with 200 u Inch Solder Plate